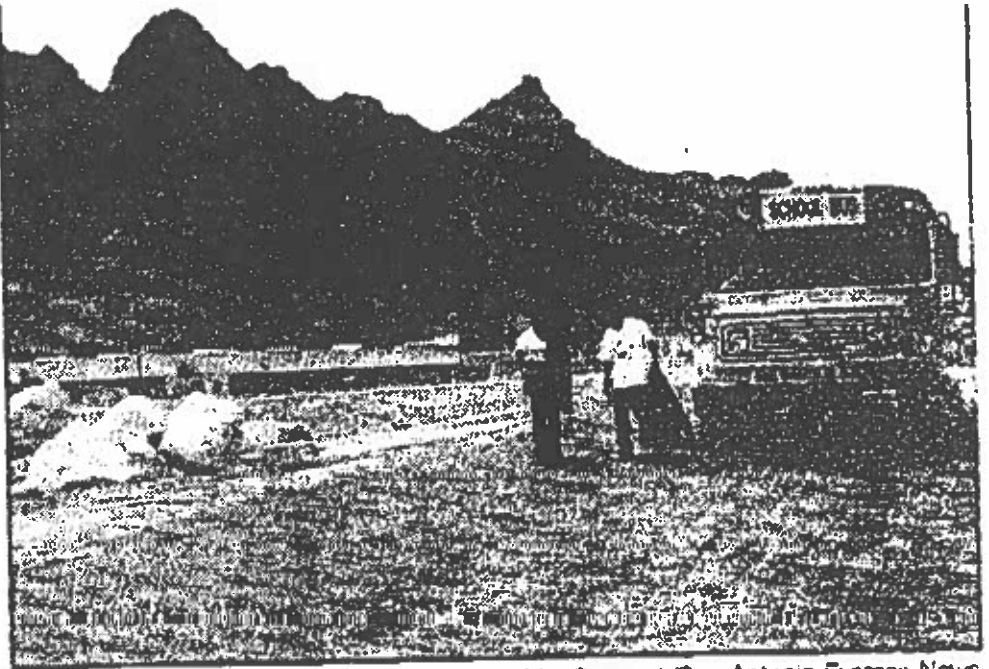


Jack Probst-

2/27/96

San Austin
paper today-

Carls



John MacCormack/San Antonio Express-News

Bus No. 5 makes a stop at the Big Bend Motor Inn next to Bee Mountain on Friday. Because there is no local high school, two dozen students must attend Alpine High School, 80 miles to the north.

Long ride may be ending for Big Bend area students

Associated Press

SAN ANTONIO — The end of the road could be in sight for what may be the nation's longest school bus ride.

School officials have begun the biggest push yet to create a high school in the remote Big Bend region, where students are forced to make round-trip commutes of 160 miles or more to get to classes.

"By hook or by crook, we're going to have a new high school here by August," Terlingua Common School District Principal Kathy Killingsworth said.

Trustees for both the Terlingua district and the San Vicente district, which is based at Big Bend National Park, have approved a proposal for a "partnership" high school and sent it to the Texas Education Agency for review.

As outlined, the new school would accommodate about 40 students in seven classrooms and use both full-time and

guest instructors.

The proposal describe technologically advanced school where students would benefit from interactive video and other computer-based instruction.

If successful, the effort would end one of life's dreary constants for Big Bend-area high school students since the early 1960s.

Because classes at the Terlingua and San Vicente districts stop at the eighth grade, students must attend Alpine High School, 80 miles to the north, to stay in school.

Some two dozen are making the commute now from Big Bend National Park, Lajitas, Terlingua and other settlements in the sparsely populated region. Students and parents say they are tired of it.

"I don't like riding the bus four hours each day. I get up at 5 a.m. and catch the bus at 5:45 a.m.," said Jenny Hines, 17, a junior.